

## SHEET INDEX

### ARCHITECTURAL DRAWINGS

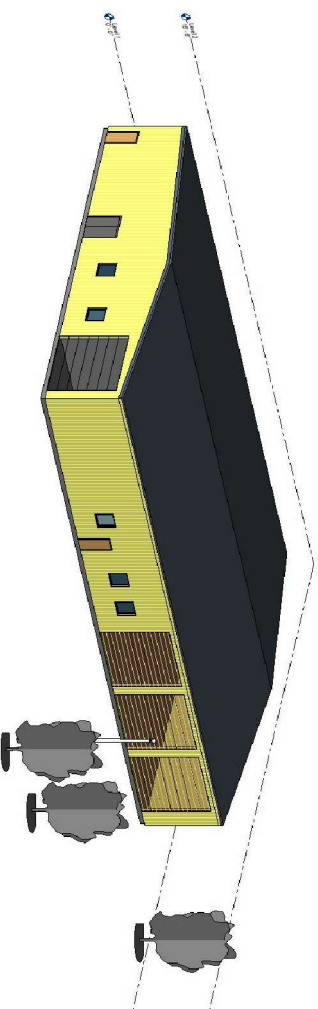
- A1- SITE LAYOUT
- A2- FLOOR PLAN
- A3- ELEVATION VIEWS

### STRUCTURAL DRAWING

- S1- FOUNDATION PLAN
- S2- FOOTING DETAILS
- S2.1- ANCHOR BOLT DETAILS;  
CROSS-SECTIONAL VIEW
- S2.2- ANCHOR BOLT DETAILS;  
PLAN VIEW

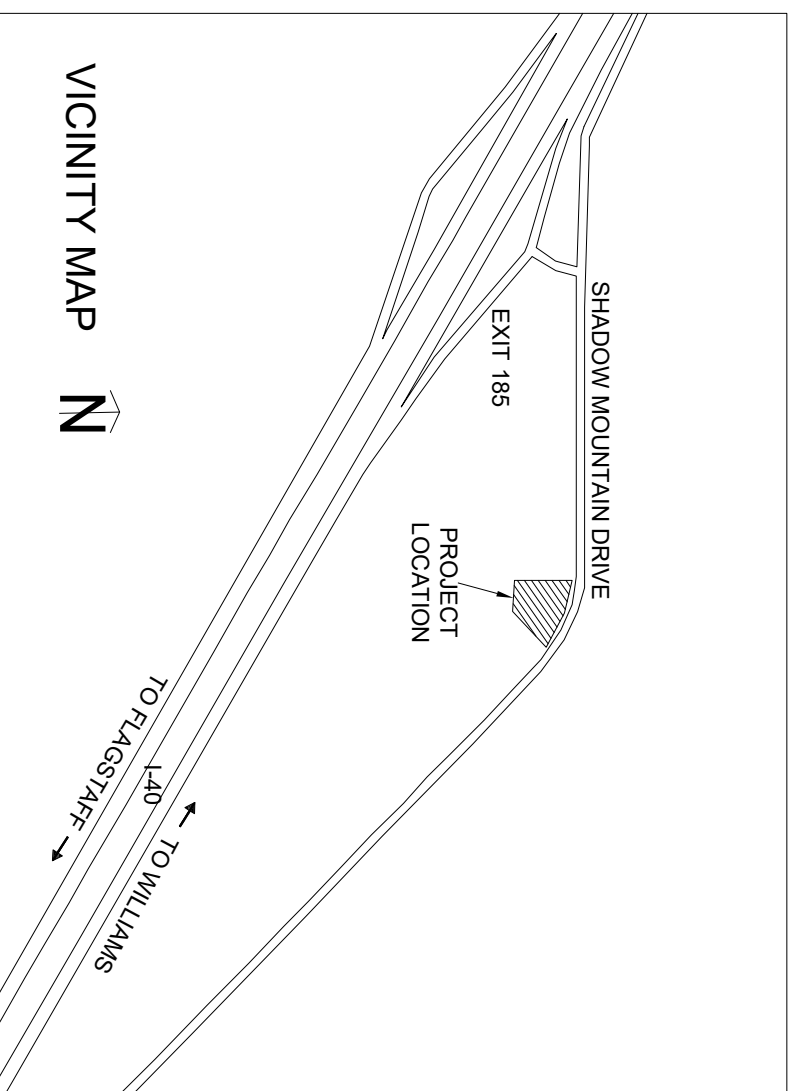
# BELLEMONT FIRE STATION ADDITION

11951 W. Shadow Mountain Drive Bellemont, AZ



## LEGEND

- \* - VEGETATION
- ⊖ - DETAIL CALLOUT



## BUILDING PARAMETERS

### DESIGN LOADS:

ROOF LIVE LOAD (snow)	40 psf
ROOF DEAD LOAD	15 psf
STEEL FRAME	75 pif
WIND LOADS:	
BASIC WIND SPEED	120 mph
RISK CATEGORY	IV
SEISMIC LOADS:	
SEISMIC ZONE	C

### FOUNDATIONS:

GEOTECHNICAL CONSULTANT: WESTERN TECHNOLOGIES INC.  
JOB NUMBER: 2526JW127

SOIL BEARING CAPACITY.....1500 psf  
FOUNDATION TYPE.....Slab on Grade

### CONCRETE:

CLASS A CONCRETE 40/50  
COMPRESSIVE STRENGTH.....4500 psi  
YIELD STRENGTH.....60000 psi

### REINFORCING:

TYPICAL REINFORCING BARS  
#4 REBAR.....ASTM A615

TYPICAL CLEAR CONCRETE COVER  
CONCRETE CAST AGAINST EXPOSED EARTH.....3"  
ALL OTHERS PER ACI 318-14

### STRUCTURAL STEEL:

ANCHOR BOLTS.....1" ASTM F1554-36  
METAL FRAME.....From frame co.

## PROJECT TEAM

ABDULLAH ALKHAYAT: SENIOR ENGINEER  
EMAIL: AMA783@NAU.EDU

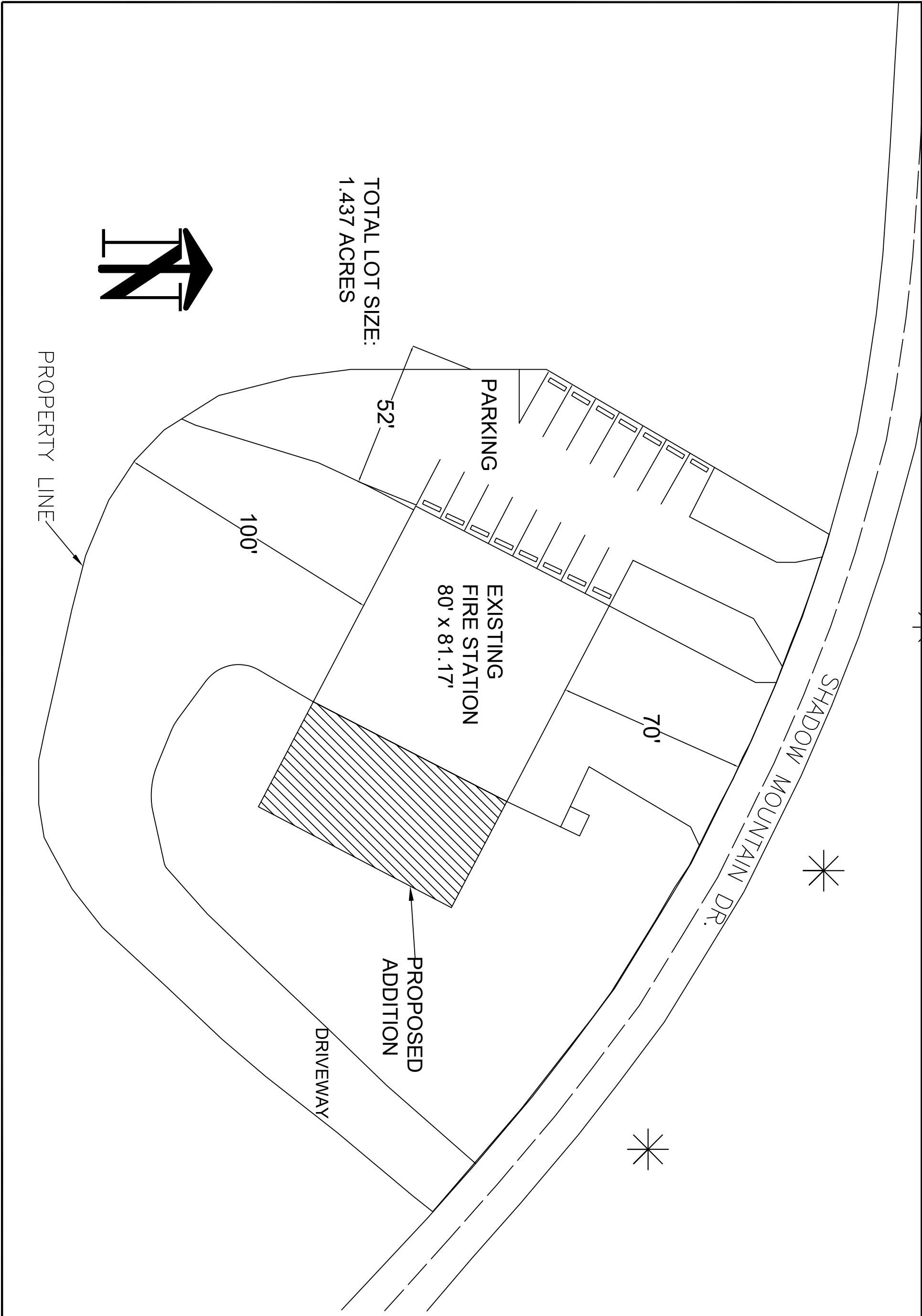
LIONEL GOY: PROJECT ENGINEER  
EMAIL: LG639@NAU.EDU

JOCELYNE RIVAS: DRAFTER  
EMAIL: JSR249@NAU.EDU

MARC WASSERMAN: INTERN/ FIELD TECH  
EMAIL: MW258@NAU.EDU

NO.	DATE	COMMENTS
1	2/18	

<b>DRAWN BY:</b> JOCELYNE RIVAS
<b>CHECKED BY:</b> MARC WASSERMAN
<b>DATE:</b>
<b>SCALE:</b> N/A



FIRE STATION ADDITION  
AI - SITE LAYOUT

DRAWN BY: JOCELYNE RIVAS  
 CHECKED BY: MARC WASSERMAN  
 DATE: 1/7/2019  
 SCALE:

NO.	DATE	COMMENTS
1	3/11/19	

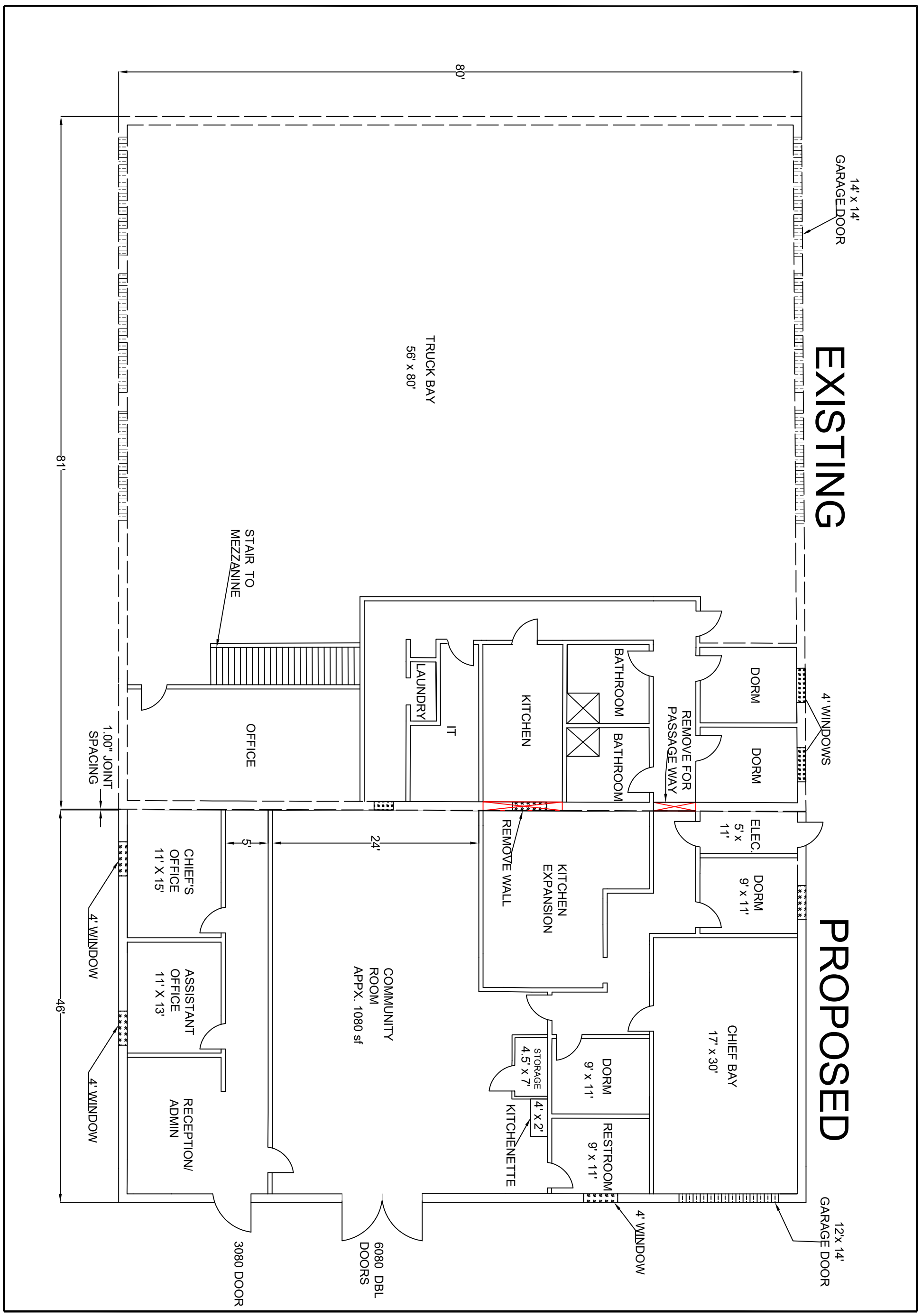


**JAML Engineering Firm**  
 Northern Arizona University Senior Capstone

SHEET  
 2 OF 8

# EXISTING

# PROPOSED



SHEET  
3  
OF  
8

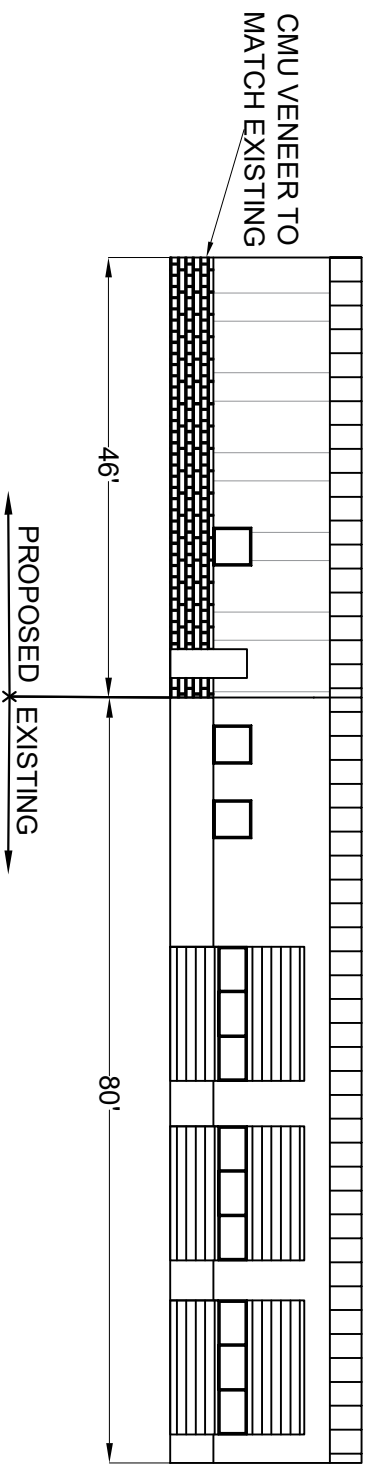
**JAML Engineering Firm**  
Northern Arizona University Senior Capstone



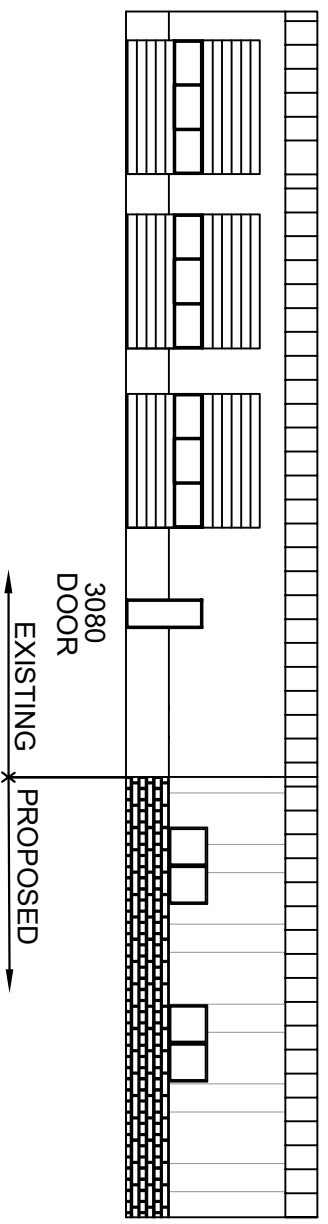
NO.	DATE	COMMENTS
1	3/11/19	

**DRAWN BY:** JOCELYNE RIVAS  
**CHECKED BY:** MARC WASSERMAN  
**DATE:** 1/7/2019  
**SCALE:**

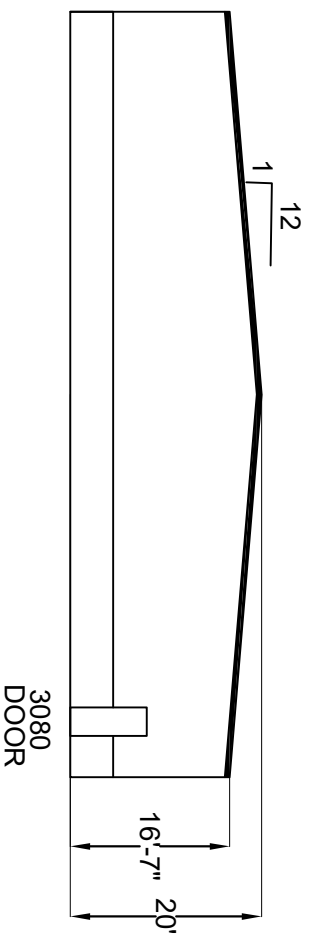
FIRE STATION ADDITION  
A2- FLOOR PLAN



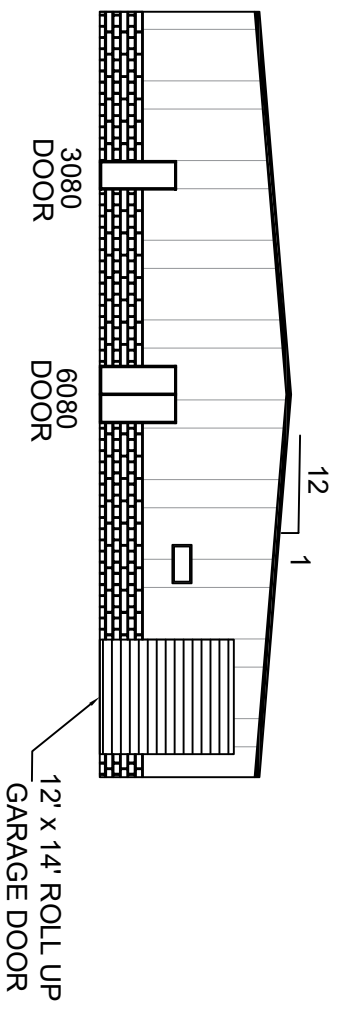
1 NORTH (FRONT) ELEVATION  
A3



3 SOUTH ELEVATION  
A3



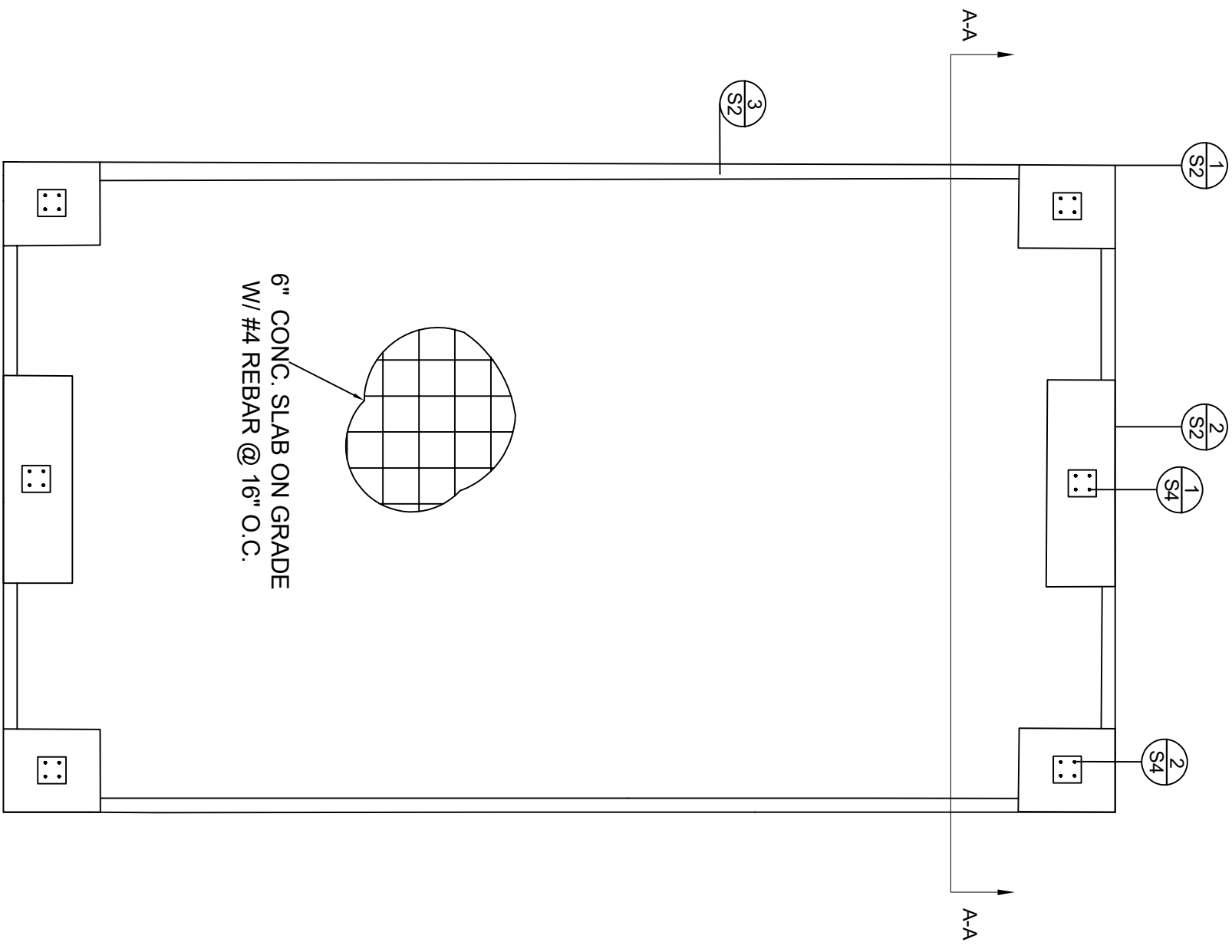
2 WEST ELEVATION  
A3



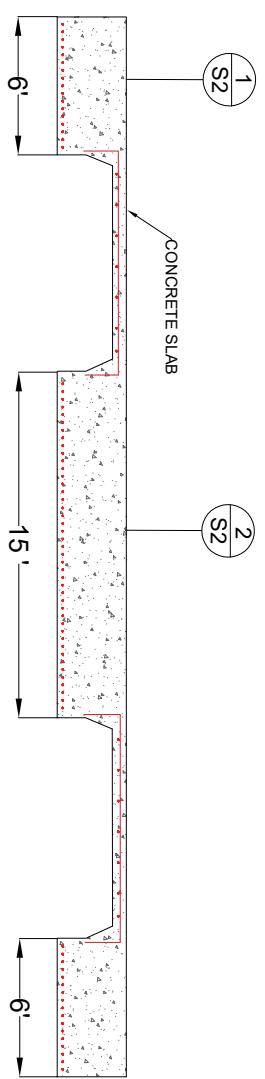
4 EAST ELEVATION  
A3

NO.	DATE	COMMENTS
1	3/11/19	
2		
3		

DRAWN BY: JOCELYNE RIVAS  
CHECKED BY: MARC WASSERMAN  
DATE: 1/7/2019  
SCALE: 1/32" = 1'



SCALE  $\frac{3}{32}'' = 1'-0''$



FOUNDATION CROSS-SECTION A-A  
SCALE 1:100

FIRE STATION ADDITION  
S1- Foundation Plan

DRAWN BY: JOCELYNE RIVAS  
CHECKED BY: MARC WASSERMAN  
DATE: 1/7/2019  
SCALE:

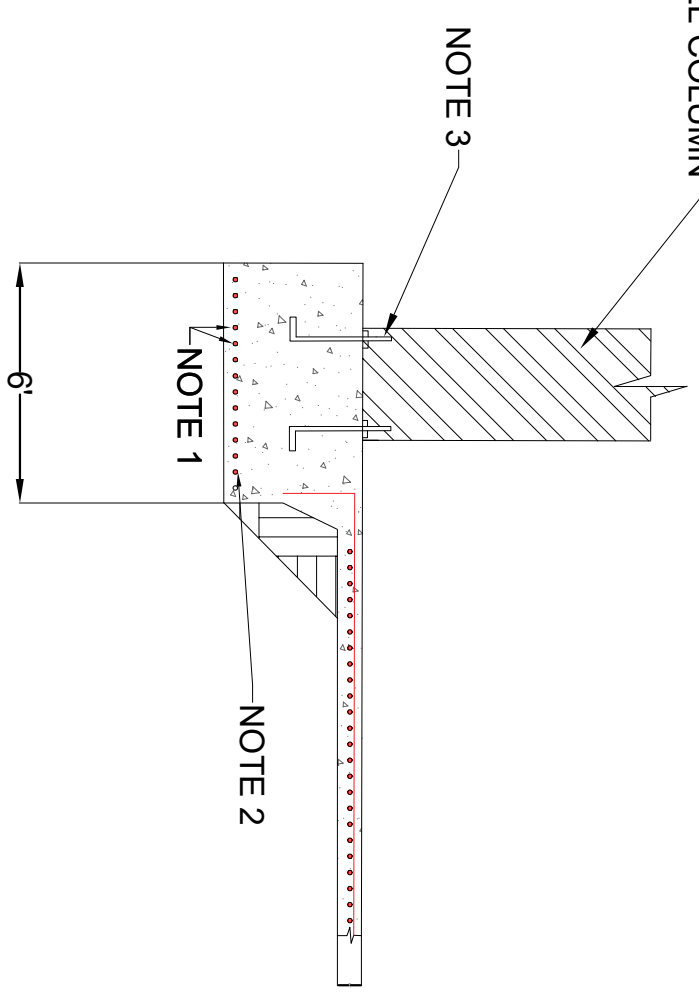
NO.	DATE	COMMENTS
1	3/11/19	



**JAML Engineering Firm**  
Northern Arizona University Senior Capstone

SHEET  
5 OF 8

STEEL COLUMN

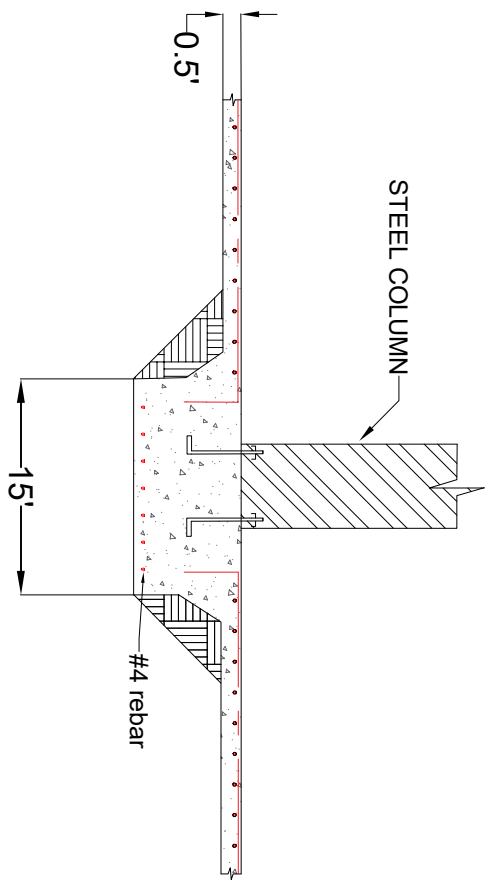


- NOTES:  
 1- 4" SPACING  
 2- (13) # 4 REBAR  
 3- 1" DIAMETER ANCHOR BOLT

1  
S2

LEFT EDGE FOOTING CROSS-SECTION

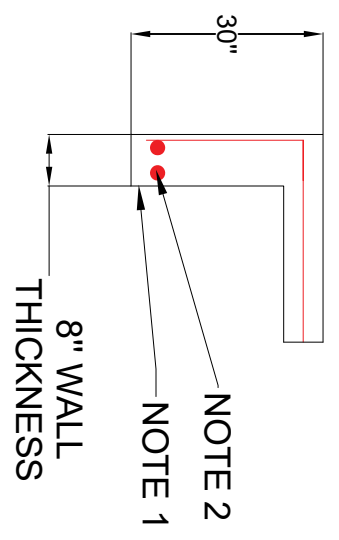
SCALE  $\frac{3}{16}'' = 1'-0''$



2  
S2

CENTER FOOTING CROSS-SECTION

SCALE  $\frac{3}{16}'' = 1'-0''$



- 1- 3" Cover  
 2- (2) # 4 Rebar

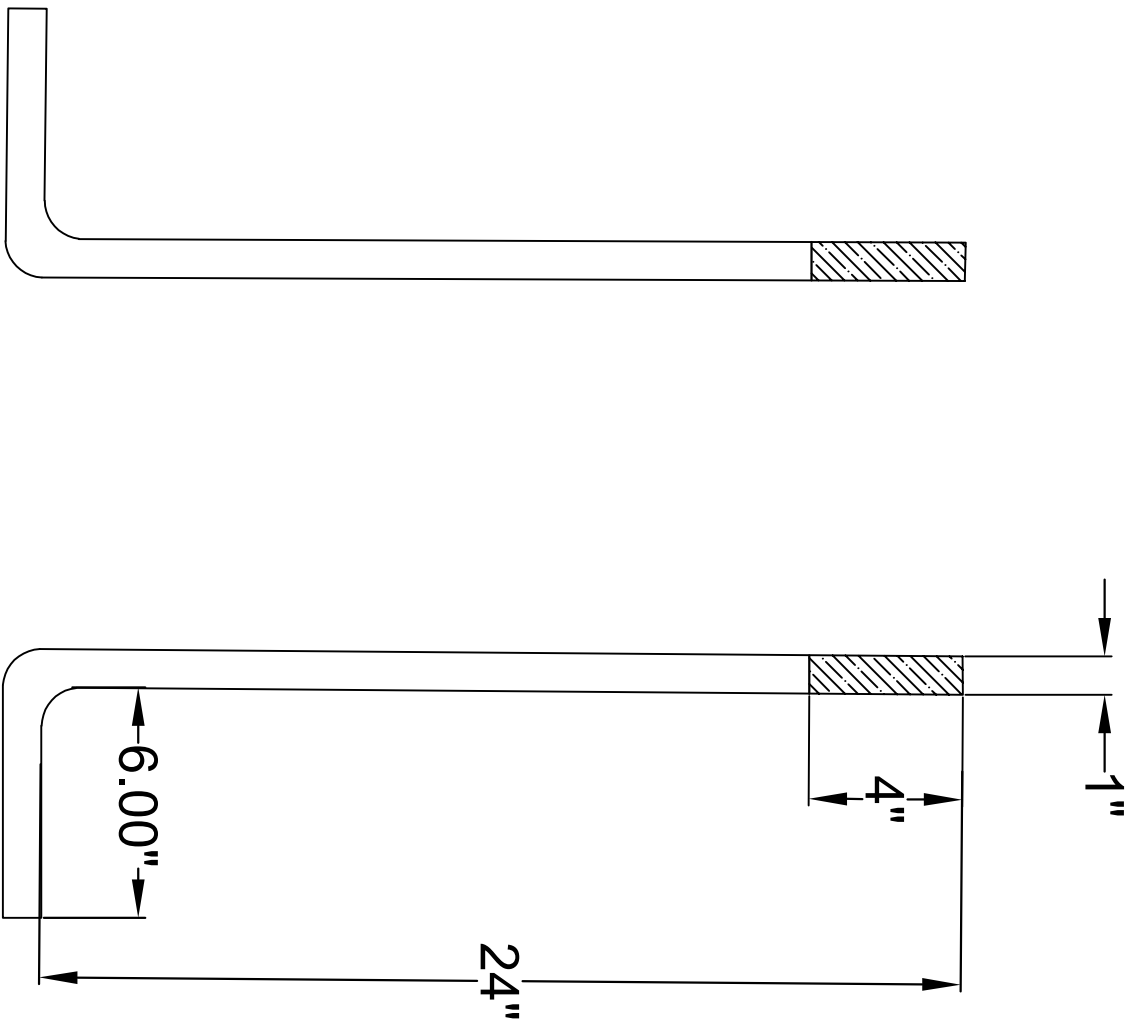
3  
S2

FOUNDATION WALL

SCALE 1:30

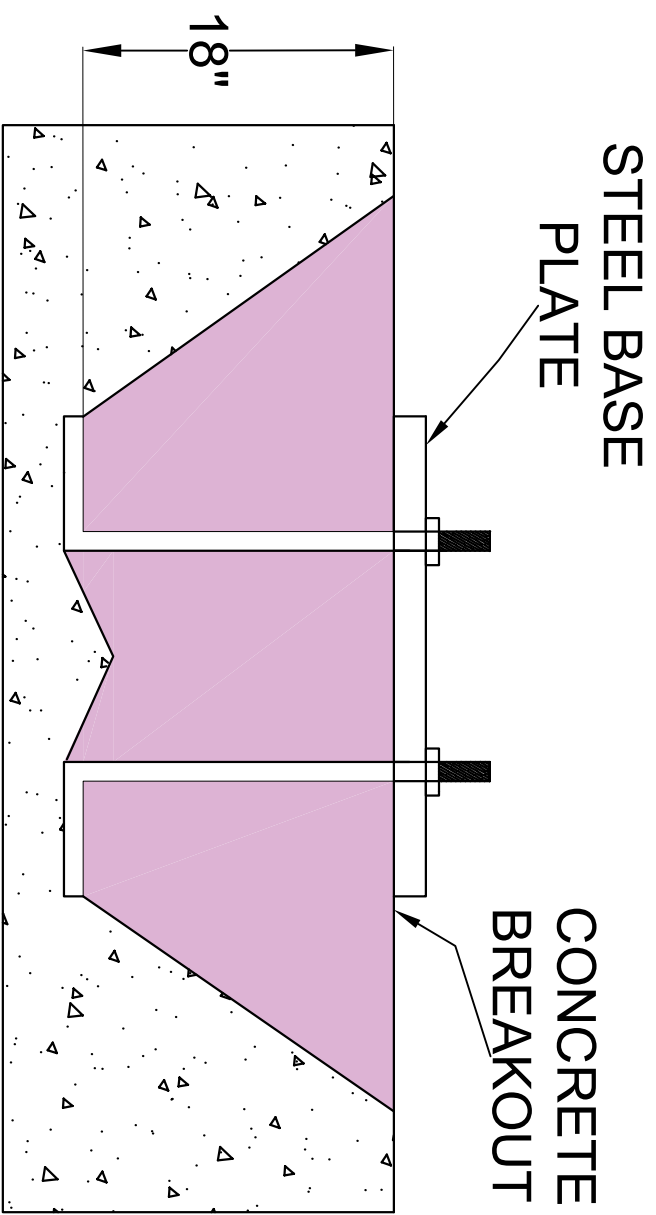
NO.	DATE	COMMENTS
1	3/11/19	
2		
3		

<b>DRAWN BY:</b> ABDULLAH ALKHAYAT
<b>CHECKED BY:</b> MARC WASSERMAN
<b>DATE:</b> 1/7/2019
<b>SCALE:</b> NTS



(4) 1" ASTM F1554 GRADE 36 ANCHOR BOLT  
 CONNECTION AT EACH FOOTING

**DIMENSIONS:**  
 D x L x C x T =  
 1" x 24" x 6" x 4"



18" ANCHOR BOLT EMBEDMENT  
 INTO THE CONCRETE FOOTING

FIRE STATION ADDITION  
 53- ANCHOR BOLT DETAILS

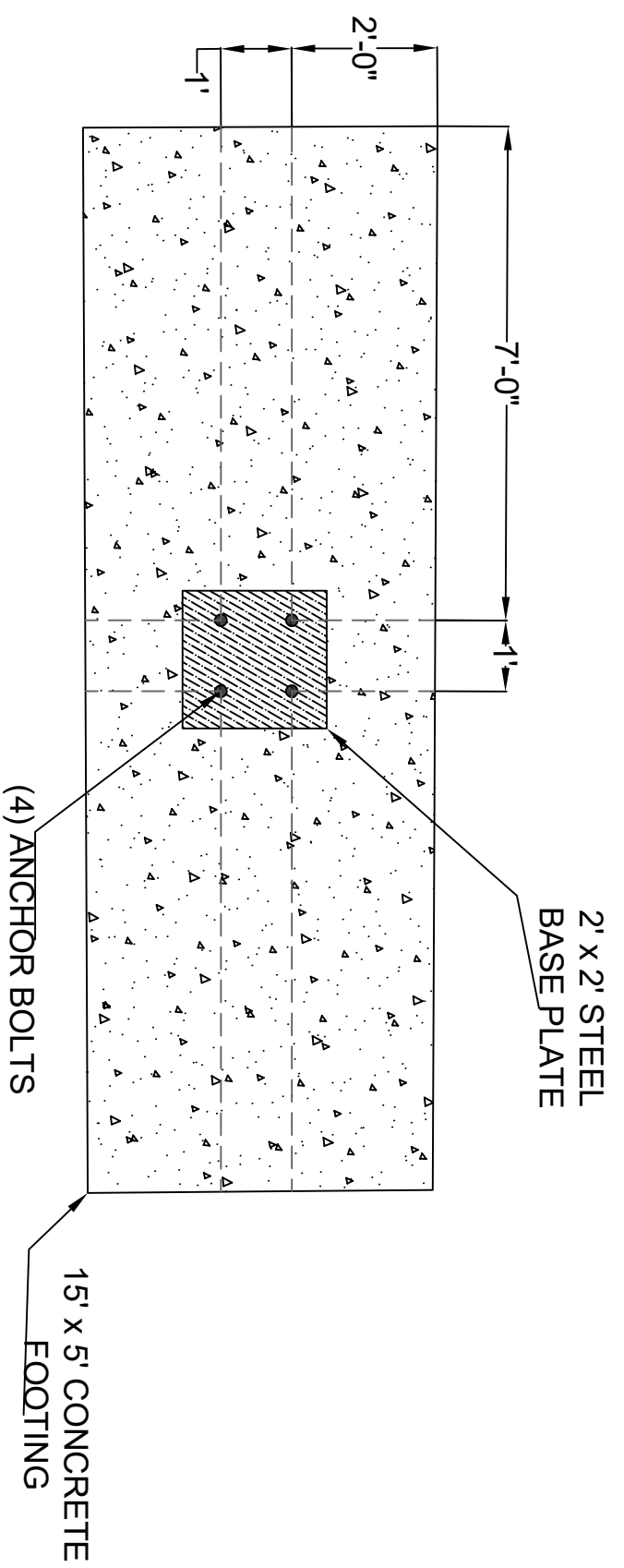
**DRAWN BY:** JOCELYNE RIVAS  
**CHECKED BY:** MARC WASSERMAN  
**DATE:** 1/7/2019  
**SCALE:** NTS

NO.	DATE	COMMENTS
1	3/11/19	



**JAML Engineering Firm**  
 Northern Arizona University Senior Capstone

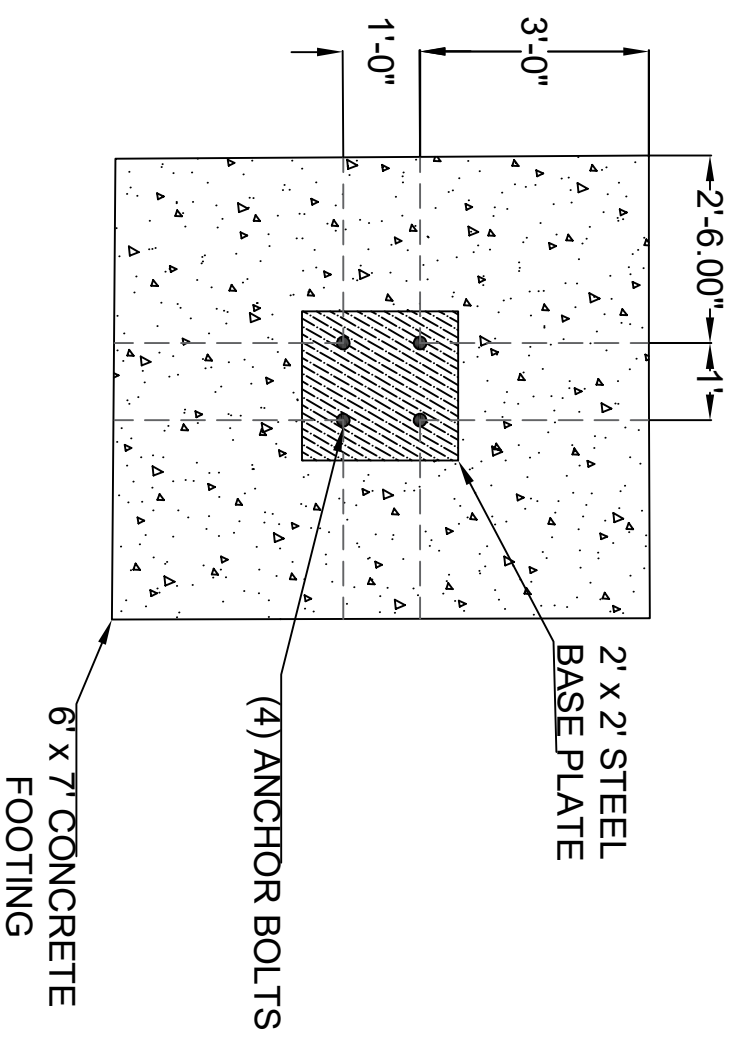
~SHEET~  
 7  
 OF  
 8



1  
S4

PLAN VIEW OF ANCHOR BOLT LAYOUT

SCALE 1:30



2  
S4

CENTER FOOTING CROSS-SECTION

SCALE 1:30

NO.	DATE	COMMENTS
1	3/11/19	

DRAWN BY: JOCELYNE RIVAS  
 CHECKED BY: MARC WASSERMAN  
 DATE: 1/7/2019  
 SCALE: NTS